

Service Area Fuel Restrictions from Final Instruction 3

Refuelling is NOT permitted within the Service Park.

Refuelling in the designated Refuel Zone and will be supervised by an experienced specialist. The refuelling zone is in the S.C.O.R.E. Site, adjacent to the Service Area. – see attached Diagram.

- The refuel zone is clearly segregated from all spectators. Access for refuelling crews will be controlled by experienced MCMC marshals.
- Engines will be switched off throughout the refuelling operation
- In line with MS-UK standard regulations, It is mandatory that crew remain **outside** the car during refuelling and this will be strictly enforced.
- Approximately six refuel areas will be designated within the Refuel Zone. Each of these areas will have a groundsheet to catch any minor spillage of fuel.
- A comprehensive Spill Kit provided by MCMC will be located in the Refuel Zone to ensure a quick response to any significant fuel spillage.
- Four x 5 kg dry powder and two x 5kg foam fire extinguishers will be located in the Refuel Zone.

Solely for the purposes of assisting with the refuelling procedure of their car, two team members of each crew may access the Refuel Zone. Competitors and team members in the Refuel Zone must comply as instructed by the Official within the zone.

- There will be a firm control of fuels and associated restrictions in the service area. Immediate, permanent and serious enforcement actions for transgression of those restrictions will be in place.
- There will be a limit on the total volume of all flammable fuel, and specific conditions of storage, held in each service bay.
- All service vehicles must contain fire-fighting equipment.
- A no smoking ban will be enforced throughout the Service Park.
- All petroleum spirit must be stored in metal containers and kept away from any source of ignition – for example in the service vehicle. The fuel must be transported in individual containers that comply with the relevant United Nations Economic Commission for Europe and are marked with the UN number (UN1203 for petrol and UN1202 for diesel).
- All containers must be indelibly marked “Petroleum Spirit – Highly Flammable”.
- The Vehicle transporting the fuel must carry a 2kg dry powder fire extinguisher.
- Petrol is to be used as a fuel only – i.e. not for cleaning.

Refuelling of Rally Cars

The organisers have made provision for the following option for refuelling competing Rally Cars:

Self-refuel in a Refuel Zone

The responsibility for controlling and co-ordinating the storage and dispensing of fuel rests with the organiser; however, they have no direct control over the activity and therefore must pass the requirements on to the competitors / entrants. A risk assessment, safety plan and incident plan is required. The organiser has responsibility for monitoring safety.



(a) 54 litres



(b) 25 litres



(c) 20 litres

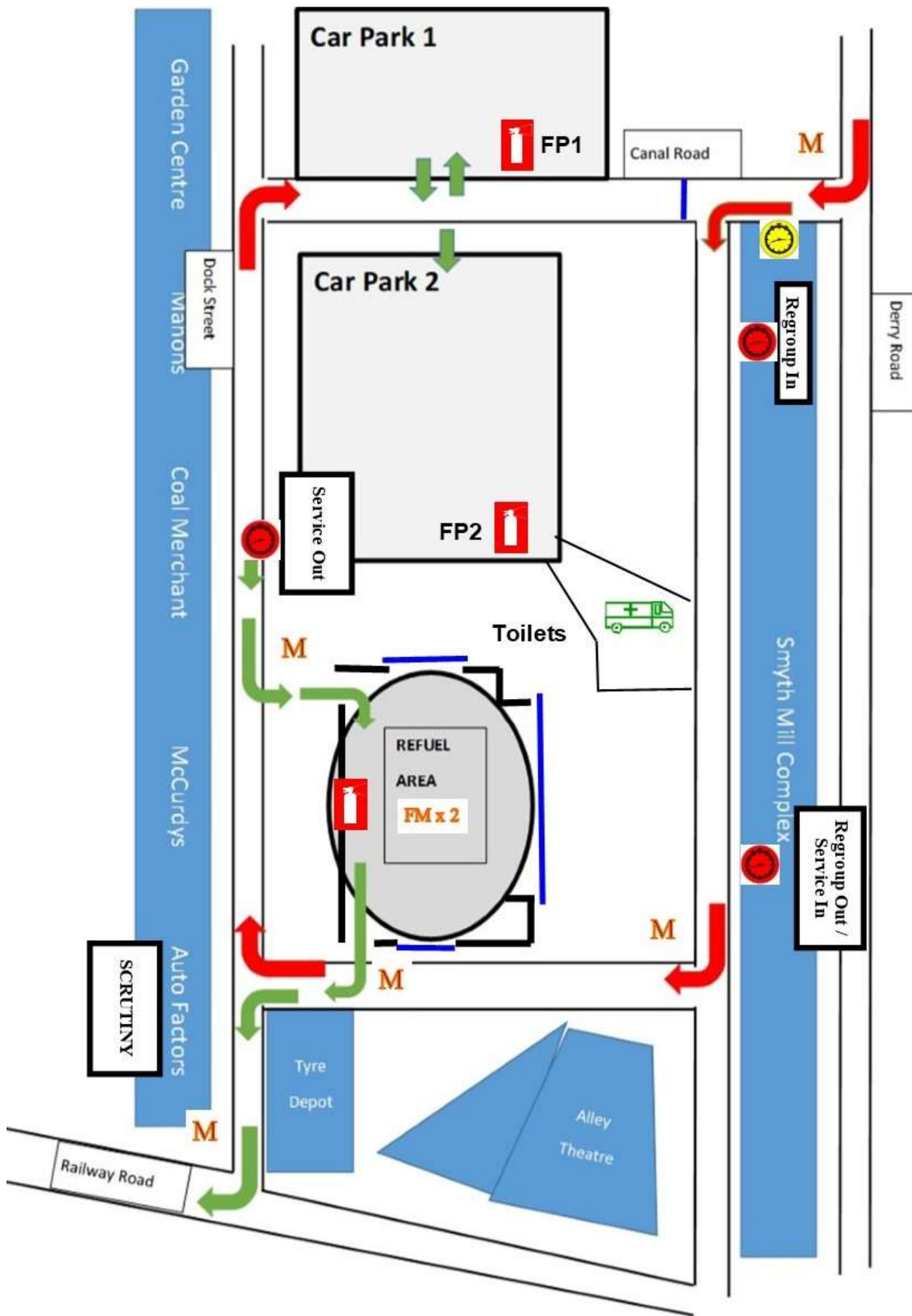
Typical fuel containers

Refuel Zone

Area Set-up	07.00 am Saturday 6th
Estimated Start	10.00 am
Estimated Finish.	15.30 pm
Estimated Support Crews	100
Estimated spectators	Nil
Refuelling Area Controller	Alan Redstone

Detailed requirements for the management of refuelling are contained in the Supplementary Regulations supplied to all competitors. Failure to comply with these refuelling regulations will be reported to the Stewards who may apply/impose a fine or exclusion.

Competing cars may also be refuelled using the facilities available at roadside filling stations along the route (these will be indicated in the Roadbook), or in the Refuelling Zone provided by the Organisers.



Fire Point 1—2 x Dry Powder
 Fire Point 2—2 x Dry Powder
 Refuel Area—4 x Dry Powder
 2 x Foam